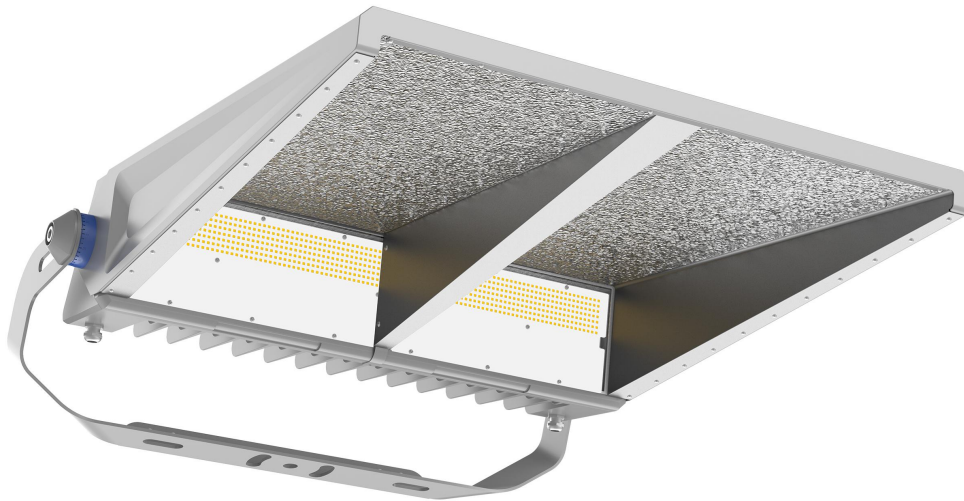




Product Specifications

(BASEBALL LED SPORTS LIGHT)



Our advanced LED sports lighting for baseball fields—designed to deliver outstanding performance and efficiency. With a remarkable light efficiency of up to 120 lm/w, and available in 400W, 500W, and 600W options, it ensures bright illumination. The die-cast aluminum heat sinking facilitates rapid heat dissipation for excellent thermal management. Equipped with anti-UV optical lenses, it provides a light transmittance greater than 94% and protection up to IK08. Featuring a 270° adjustable rack angle and IP66 waterproof design, it also includes double surge protection and options for DALI and DMX intelligent control, making it ideal for various applications.

Features

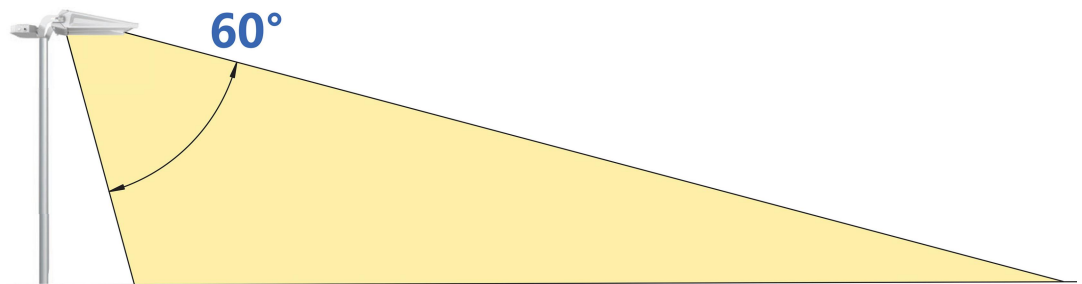
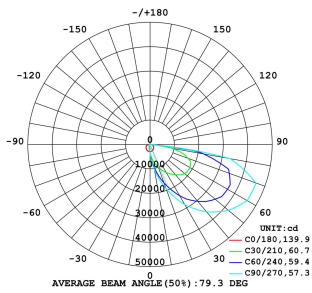
- High light efficiency up to 120lm/w, available with power 400W, 500W, 600W;
- Die-cast Aluminum heat sinking, high thermal conductivity enables rapid heat dissipation to the outside, excellent thermal management;
- Anti UV optical lens, IK08 and light transmittance > 94%, professional light distribution;
- Rack angle allows precise installation up to 270°;
- IP66 structural waterproof design; Double surge protection: driver & extra 10KV SPD;
- Available with DALI and DMX intelligent control.

Technical Specifications



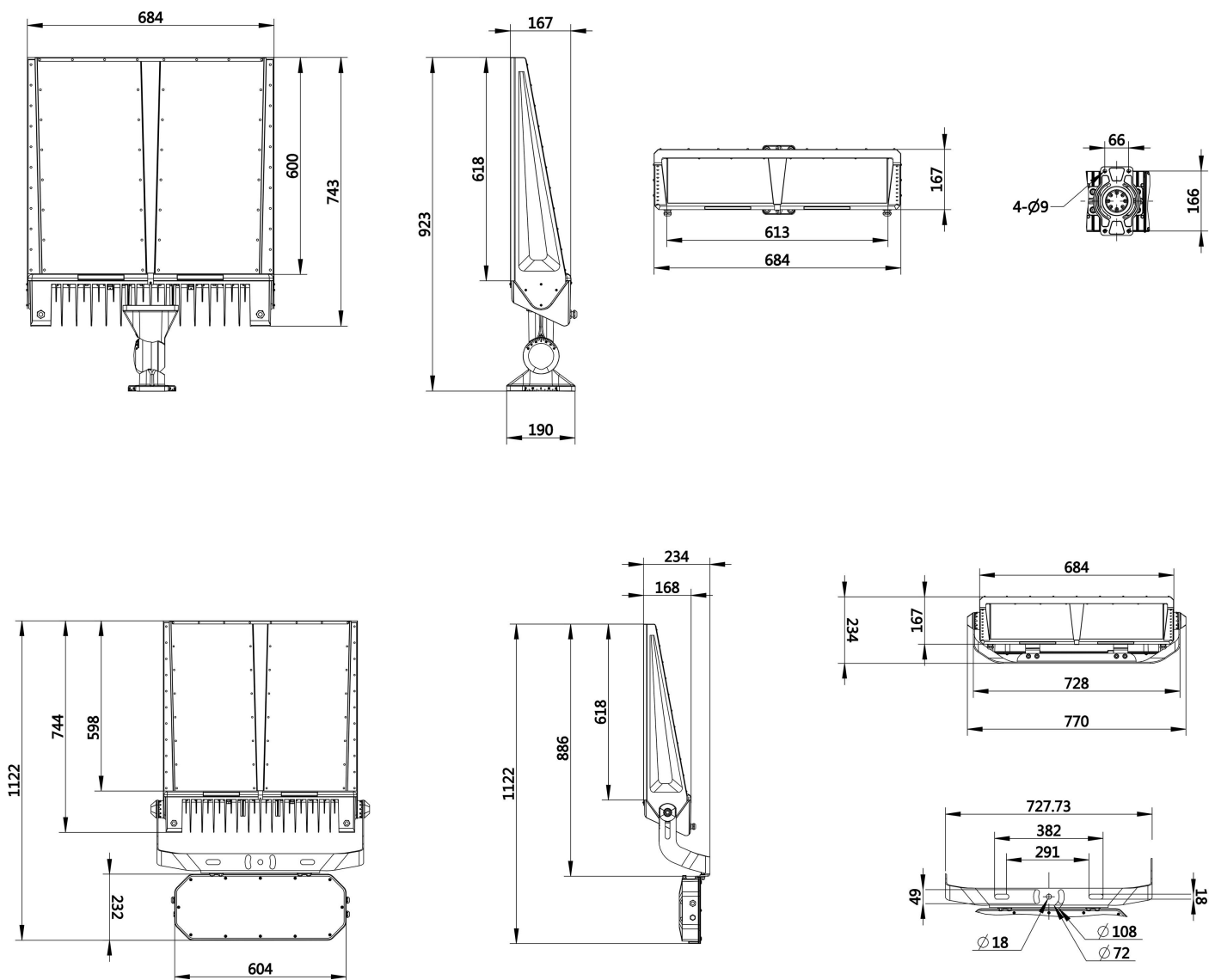
Model No.	LGS-GSBL-400W	LGS-GSBL-500W	LGS-GSBL-600W
Power	400W	500W	600W
Lumen Output(@5000K)	46,000lm	52,500lm	60,000lm
Lumen Efficiency	115lm/w	105lm/w	100lm/w
CCT	3000/4000/5000/5700/6500K		
CRI	Ra>80(Ra>90 optional)		
Chip Brand	Lumileds		
Beam Angle θ/2	Asymmetric 60°		
Light Decay Rate	Less than 3% in 6,000Hours		
Lifespan	≥50,000Hrs		
Input Voltage	100-277VAC 50/60Hz		
Power Factor	PF>0.95		
THD	<15%		
Driver Brand	Sosen		
Material	Die-cast Aluminum Housing+Polycarbonate Lens		
Degree of Protection	IP66 & IK08		
Dimensions	923*684*190mm		
Net Weight	16kg		
Package	1pcs/CTN		
Gross Weight	17KG		
Carton Dimensions	98*78*24cm		
Finish	Silver		
Installation	Mounting		
Working Temperature	-30℃~+50℃		
Storage Temperature	-40℃~+70℃		
Certificate	CE, CB, RoHS		
Warranty	5 years		
Optional Functions	0-10V/PWM/DALI/DMX Available on Request		

Light Distribution

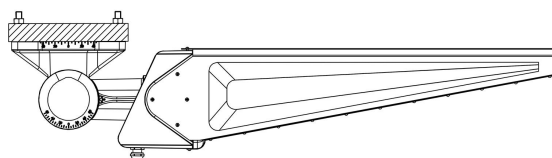
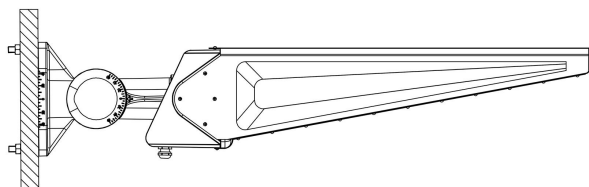
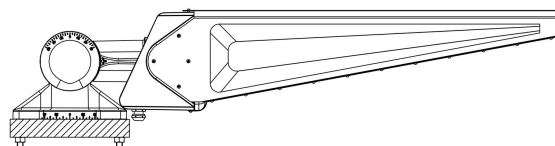
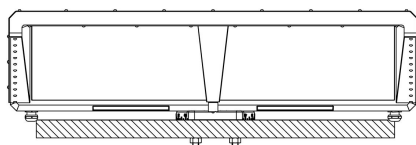
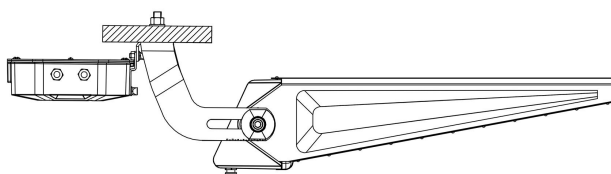
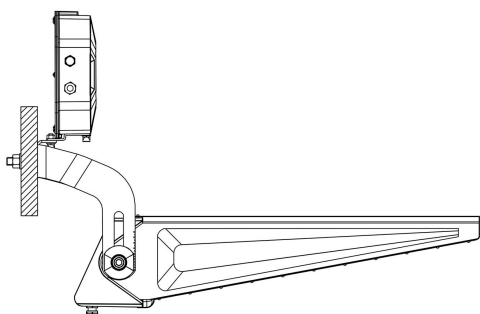
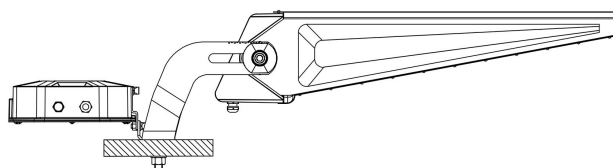
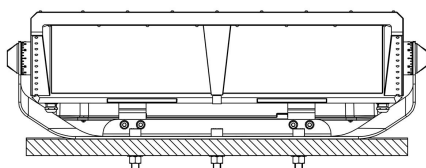


Dimensions and Drawings

Unit: mm



Installations



Installation Requirements

1. Power off before installation, and read the instruction carefully;
2. Make sure the installation material can endure the lamp weight;
3. Please prepare two sets of expansion bolts, and drill holes in the installation body, then install the lamp, finally screw down expansion bolts and bracket screws;
4. Connect lamp wire to match power wire, and seal the joint with insulation;
5. The lamp must be installed reliably to prevent loosening and falling off.

Notice

1. Please first read the product specification carefully, make sure the using environment conform to specification, then it can be used;
2. Please confirm the input voltage, frequency before use;
3. This product must be installed by professionals;
4. If there is any damage to the power wire or shell of the product, it should be taken as defective product and do not use;
5. Dangerous high voltage, non-professionals are not allowed to maintain the product;
6. If external soft cable or soft wire of the light is damaged, it should be replaced by manufacturer or service agent or personnel with similar qualification to avoid danger.

Applications

